

# ST. THOMAS MORE PARISH

St. Thomas More Church

53 ROCKLAND STREET, NARRAGANSETT, RI 02882-3620



St. Veronica Chapel

1035 BOSTON NECK ROAD, NARRAGANSETT, RI 02882

## MASS SCHEDULE

### **ST. THOMAS MORE CHURCH**

53 Rockland Street

**DAILY MASS - 9:00 AM - MON.- SAT.**

#### **WEEKEND MASSES**

SATURDAY - 5:00 PM

SUNDAY - 8:00 AM & 10:00 AM

**RECONCILIATION/CONFESSES**

SATURDAY - 4:00-4:45 PM

OR BY APPOINTMENT

### **ST. VERONICA CHAPEL**

1035 Boston Neck Rd.

#### **WEEKEND MASSES**

SATURDAY - 4:00 PM

SUNDAY - 9:00 AM & 11:00 AM

*All masses available on Livestream*

**Fr. Marcel L. Taillon, S.T.L.**

*Pastor*

*Chaplain, Narragansett Police Department*

*Chaplain, Narragansett Fire Department*

*Chaplain, South Kingstown Police Department*

*fathermtaillon@gmail.com*

**Fr. Joseph Mappilamattel, C.M.I.**

*Associate Pastor*

*mappilamattel@gmail.com*

**Mr. John C. Halloran**

*Pastor Emeritus*

**Joseph P. Henry**

*Pastor Emeritus, SS. John & Paul, Coventry*

*In Residence*

*St. Clare Home*

*309 Spring St., Newport, RI 02840*

**Deacon Joseph Clossick**

*joseph.clossick@bms.com*



**FEBRUARY 19, 2023 - THE SEVENTH SUNDAY IN ORDINARY TIME**

**STTHOMASMORERI.ORG | PARISH OFFICE 401.789.7682**



## *It's Lent 2023!*

By the time you read this our mission team will be deep in Cajun country serving the poor and needy. We are a strong team of 21 adults and teens. We are only as strong as your prayers. Thank you for all your support.

Ash Wednesday day is this week. Please plan to attend one of our three daily masses. The ashes remind us that God created us from the earth and that we are mortal. Ashes are an outward sign of our need for God, an acknowledgment of sin and our need for repentance.

Most of us “give up” things for Lent. This is to take our will to the gym where we in freedom make choices for God that should remind us of Him, His sacrifice and our desire to love Him here and be with Him forever!

I think one of the areas besides food and drink that should be in the running is technology. One of the things about our mission trip that is so hard but so good for us, is a fasting from technology. The teens and most adults do NOT bring any technology. It is one of the hardest parts of our mission at the beginning, but one of the best graces in the end. We talk, pray and play games at night. We live as our grandparents lived in community and love.

Might you fast from social media? I know some Catholics who stay off Facebook for all weekdays. Some give up instagram or snapchat. How often do we “scroll” when we could be praying or reading the scriptures. When we do use social media how about going to the Hallow app or listening to podcasts like Matt Fradd or Pints with Aquinas? We have suggestions for you if you need some!

How about watching the Chosen series, which is a creative series available as an app or you can watch through the Angel app, that traces the life of the disciples and their weaknesses, success and struggles.

I would urge you to pull out a bible and start reading it! Maybe one of the Gospels? How about reading the Passion accounts in all four Gospels?

Attend daily Mass at least once a week! Fr. Joe is adding a Friday evening Mass at 6:30 prior to the Stations of the Cross at 7 PM.

Lets all go to confession soon...this is the most direct form of repentance!

Pray for us in Louisiana! Holy and blessed Lent!

*Fr. Taillon*

# Lent 2023

## Fasting and Abstinence Reminder

Church law requires abstinence from meat (for those 14 and older) on Ash Wednesday, Good Friday, and all the Fridays of Lent. In addition, Ash Wednesday, and Good Friday are fast days: Those between the ages of 18 and 59 should eat less – no solid food between meals only one full meal and 2 smaller ones. (One's health can excuse you from these rules).

## St. Thomas More Parish Lenten Mission

### Jesus Crucified and Eucharist Revival

March 12th, 13th, & 14th

6:00 PM - St. Veronica Chapel

**Fr. Michael Champagne**

*Jesus Christ Crucified Community,  
St. Martinville, LA*



### New for 2023

6:30 PM Mass  
Every Friday before  
Stations of the Cross.



### Stations of the Cross

Every Friday during Lent  
7PM - St. Thomas More

### Sunday Movie, March 5th

**Mother Teresa - "No Greater Love"**

2:00 PM - St. Thomas More Parish Hall

### Daily Mass

**St. Thomas More:**

Monday–Saturday at 9:00AM | Friday at 6:30 PM

**The Rosary** each day following morning Mass  
& on Saturday following the 9AM Mass

**Confessions** - Saturdays from 4:00-4:45PM  
at St. Thomas More or by appointment.

**Lectures Series** - 2:30 PM - St. Thomas More Parish Hall (30 min.)

February 26th - "Carmelite Spirituality" by Fr. Joe

March 26th - "Jewish Roots of the Eucharist" with Fr. Taillon

### Operation Rice Bowl

Families are encouraged to eat a "poverty meal" once a week and then place the money saved in a "Rice Bowl" as a contribution for the poor. Contributions will be collected on Palm Sunday, April 2nd.



### Parish CD/Pamphlet Book Rack:

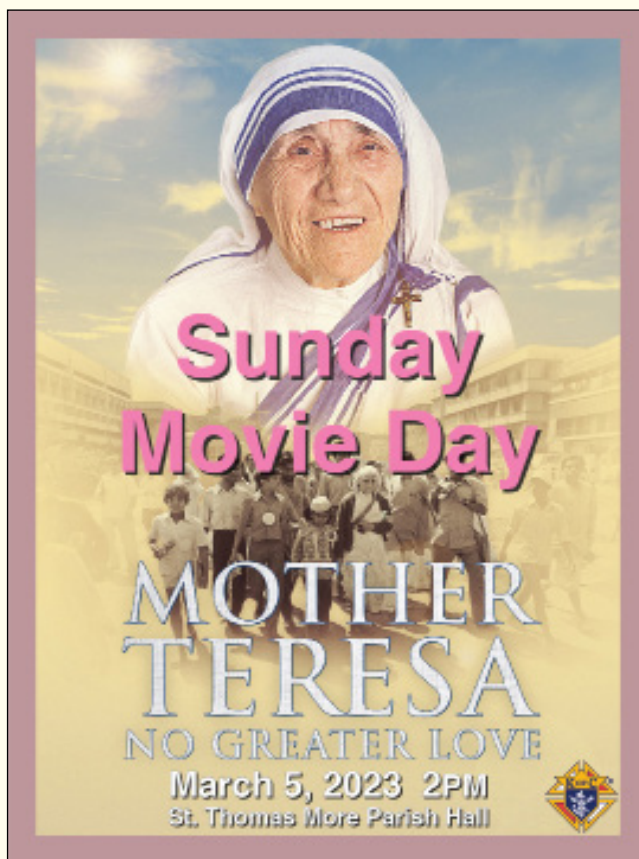
Some excellent CD's & pamphlets are available in the racks located at the entrance of both Churches. Children's books are also available.





### **Welcome to America!**

Pictured above (center) with Fr. Taillon is Marian, a Ukrainian refugee, along with Fr. Mykhaylo Dosyak, Pastor of St. Michael's Ukrainian Catholic Church in Woonsocket. Using proceeds from the summer raffle, your generous donations helped to pay for his flight from Warsaw along with some clothes and toiletries to get started. His wife and children remain back in the Ukraine.



### **In Memorial 20th Anniversary**

Please offer a peaceful repose for the souls of the deceased victims of the Station Nightclub Fire, for their families and friends, and for all who mourn their loss. May the light of Christ bring them peace and healing.



**Happy 95th Birthday  
to parishioner Bill O'Brien!**

# MASS *intentions*

SEVENTH SUNDAY IN ORDINARY TIME

SATURDAY, FEBRUARY 18th (Vigil)

4 PM – Birthday Remembrance ~ Jim Provensal

5 PM – for the soul of Irene Lavallee

SUNDAY, FEBRUARY 19th

8 AM – for the souls of Margaret & Samuel Conca

9 AM – for the souls of Clara Merlino & Claire Grande

10 AM – for the soul of Patricia Normandin

11 AM – for the souls of Richard & Mary Jane Stanley

MONDAY, FEBRUARY 20th

9 AM – for the soul of Robert Walsh

TUESDAY, FEBRUARY 21st

9 AM – Special Intention for the Delaney & Kirwan families

ASH WEDNESDAY, FEBRUARY 22nd

9 AM – for the souls of Brian & Marion Gillcrist

12 noon – Birthday Remembrance ~ Linda A. Ruscito

7 PM - Sara Rivera

THURSDAY, FEBRUARY 23rd

9 AM – 17th Anniversary ~ Dorothy Cook

FRIDAY, FEBRUARY 24th

9 AM – for the soul of Lucia Monti

6:30 PM - Vocations to the Priesthood

SATURDAY, FEBRUARY 25th

9 AM – for the soul of Ray Lydon

FIRST SUNDAY OF LENT

SATURDAY, FEBRUARY 25th (Vigil)

4 PM – Birthday Remembrance ~ Angela Hanrahan Chatwin

5 PM – for the deceased members of the Del Monico family

SUNDAY, FEBRUARY 26th

8 AM – for the soul of Geraldine Egan

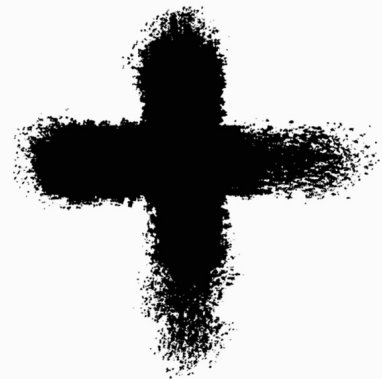
9 AM – for the soul of Solange A. Sullivan

10 AM – Pro Populo

11 AM – for the soul of Alfred Cafaro

## ASH WEDNESDAY

February 22



### MASS SCHEDULE

St. Thomas More - 9AM & 12:00 Noon

St. Veronica Chapel - 7PM

### 2nd Collection

The second collection on Ash Wednesday is for Almsgiving.

### Presidents' Day

The parish office will be closed on Monday, February 20th in observance of Presidents' Day.

### Did you know?



Fr. Joe Mappilamattel is available for the following: counseling - both personal and spiritual, confessions and home blessings.

Please call the parish office at 789-7682 to schedule an appointment or email Fr. Joe at [mappilajoseph60@gmail.com](mailto:mappilajoseph60@gmail.com)





"But I say to you, love your enemies  
and pray for those who persecute you."

Matthew 5:44

## NON-VIOLENT RESISTANCE

Our readings from Leviticus and from Matthew today explore an especially difficult challenge: how to respond to injury and humiliation. Leviticus teaches that, in order to be holy, God's people must refrain from grudges or revenge. In Matthew, Jesus teaches that we must first avoid actions that continue an escalating cycle of retribution. Jesus advocated a creative non-violent resistance, a response that both refuses to accept being humiliated and keeps open the possibility of reconciliation. For his listeners, turning the other cheek or walking the second mile were ways to throw the oppressor off-balance. They expose the harm being done, and sustain one's personal dignity. When Jesus follows with his next teaching, "love your enemies," he points to what might be a long journey of forgiveness toward those who hurt us. At these times, we might remember that Jesus, in his suffering and death, followed a similar path.

## TEMPLE OF GOD

When Paul writes "you are the temple of God," note that he uses the plural form of "you." He was speaking about the community at Corinth as a temple. For Paul, a temple is where God dwells. God abides, and is active within, the shared life of the community. Paul speaks at length about the divisions within the Corinthian community. These divisions were seen as a defilement of God's temple.

We encounter divisions in our own Church today, sometimes accompanied by a troubling lack of humility and charity. Often the conflicts revolve around establishing markers of true discipleship, with some emphasizing personal faith and morality, and others emphasizing justice and the Church's social teachings. Perhaps the Spirit, active in the temple of our shared life, points toward Jesus' command "love your enemies." Perhaps we best exhibit discipleship in the charity we extend, and our capacity for dialogue, with those who disagree with us or who are unkind to us.

## THE SERMON

Today we conclude the series of Sunday Gospel passages from the Sermon on the Mount, Matthew's chapters 5–7. Having proclaimed the coming of the Kingdom, Jesus extensively described to his new community what life is like in this new realm, and the inner dispositions needed to enter into it. He exposed hidden places of the heart, especially those places that needed to be healed.

The Sermon is a huge challenge for us today. The Sermon pushes against our attempts to compromise what God summons us to be and to do. It challenges our deep desires to see ourselves as virtuous, and to resist God's desire to transform us. It reminds us that we are both loved by God and in need of God's help. As we anticipate the season of Lent, consider prayerfully reading the Sermon as a whole. We are invited to carefully explore our deeper motivations, to allow God to uncover and to heal our fears and our wounds.

## TODAY'S READINGS

Leviticus 19:1–2, 17–18  
Psalm 1–2, 3–4, 8, 10, 12–13  
1 Corinthians 3:16–23  
Matthew 5:38–48

# Happenings around the parish

## Gospel Reflections Group

All are welcome to join our informal discussion group which meets on Mondays from 10-11:30 AM in the parish hall. Over coffee & refreshments, we read and reflect on the Gospels of the coming week and share our personal insights of those readings.

## Men's Bible Study

Our parish has a very active group of men who meet each Saturday morning in the parish hall at 7:30 AM to discuss the Sunday scripture readings. This is very informal and all are invited to join.

## Pennies for the Poor

The small donation boxes on the church walls labeled "Pennies for the Poor" goes to the Diocesan Dire Emergency Fund in South County, which helps with rental assistance, utilities and prescriptions. Thank you.

## Prayer Chain Ministry

If you know someone who would like extra prayers, please call Jean at 783-3403 to express your request. Volunteers are needed and welcome to join this important ministry.

## Pray the Rosary

The rosary is prayed Monday - Saturday after the 9:00 AM Mass at St. Thomas More. All are welcome.

## Rosary Repairs

Drop broken beads in the box in the foyer using the envelope provided. Include your name and contact info. You will be contacted within a few weeks when your repair is complete.

## St. Vincent dePaul clothing bins

Accepts clothing and shoes. Bins located at the back of the St. Thomas More parking lot, inside the white fence.



## Relevant Radio "Morning Air" Show

Join Fr. Taillon at 550 AM every Wednesday at 8:00 AM or listen on [relevantradio.com](http://relevantradio.com)

- listen on your computer: <http://relevantradio.com>
- get the App for your phone: [relevantradio.com/app](http://relevantradio.com/app)
- listen on your radio: AM 550 in the Providence area

## Religious Education

There are no Religious Education classes the week of February 19th for Winter Break.

Classes will resume the week of February 26th for grades 1 through 8.

## PRO-LIFE CORNER

*"If the bringing of children into the world is today an economic burden, it is because the social system is inadequate; and not because God's law is wrong. Therefore, the State should remove the causes of that burden. The human must not be limited and controlled to fit the economic, but the economic must be expanded to fit the human."*

- Fulton J. Sheen

## Faith Direct

FAITH DIRECT®  
inspiring secure giving®

Online giving is very easy!

Visit [faithdirect.net](http://faithdirect.net) and enter our parish code: R1147.

Donations can be easily changed one-time, weekly or monthly.



## Rhode Island Blood Center

### Every Donation Can Save Up To 3 Lives

Consider donating blood at any Rhode Island Blood Center donor center throughout the state.

To register, visit [www.ribc.org/locations](http://www.ribc.org/locations) or call 401-453-8383

When donating, please be sure to use parish Sponsor Code 0626.

## WEEKLY PARISH FOOD COLLECTION

### Current Needs

- |  |                              |
|--|------------------------------|
| ✓ Natural Peanut Butter                                  | ✓ Low Sodium Canned Veggies  |
| ✓ Low Sugar Jelly  | ✓ Canned Fruit in 100% Juice |
| ✓ Baked/Black/Kidney Beans                               | ✓ Healthy Snacks             |
| ✓ Whole Grain Cereal/Crackers/Pasta & Jarred Pasta Sauce |                              |

Collection baskets are located at the entrance of both churches.